

Rescue





Rules 2

1 green pawn in the finish square = 1 point.

1 black pawn in the finish square = -1 point.

1 yellow pawn in the finish square = 0 points.

Starting position to choose between the 2 available.

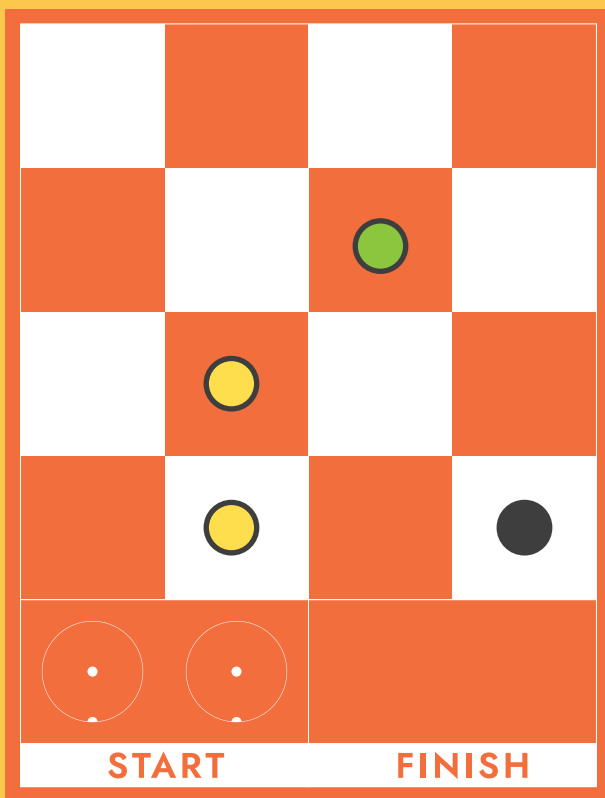
It is not allowed to take the robot out of the grid.

It is allowed to expel pawns from the grid.

The referee has the last word in the event of a dispute over the rules.

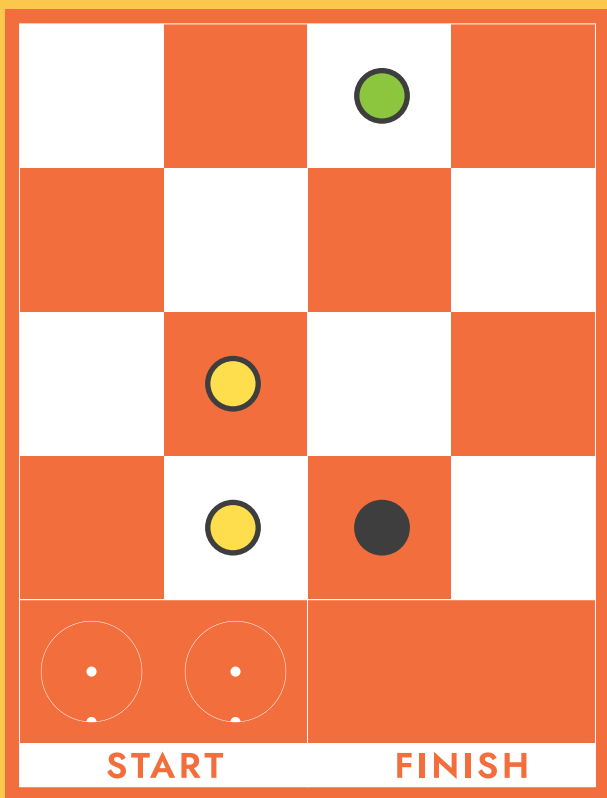


Challenge 1



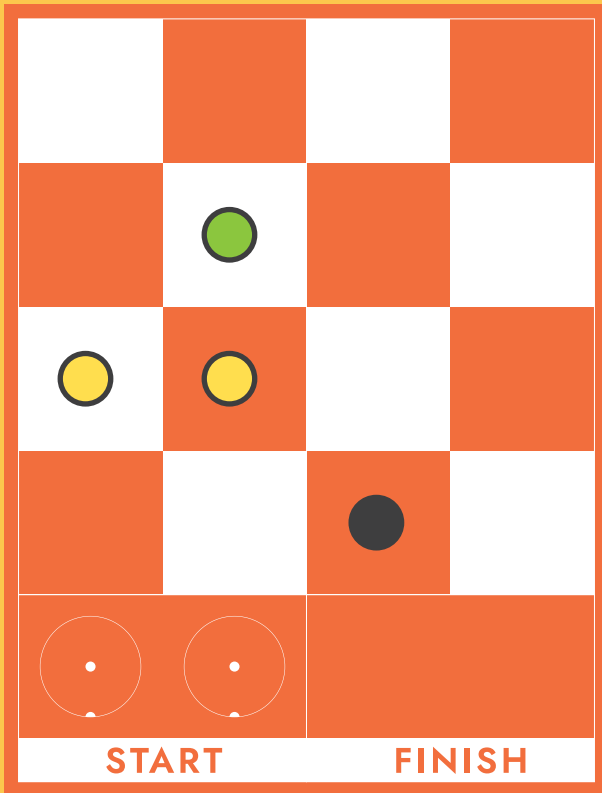


Challenge 2

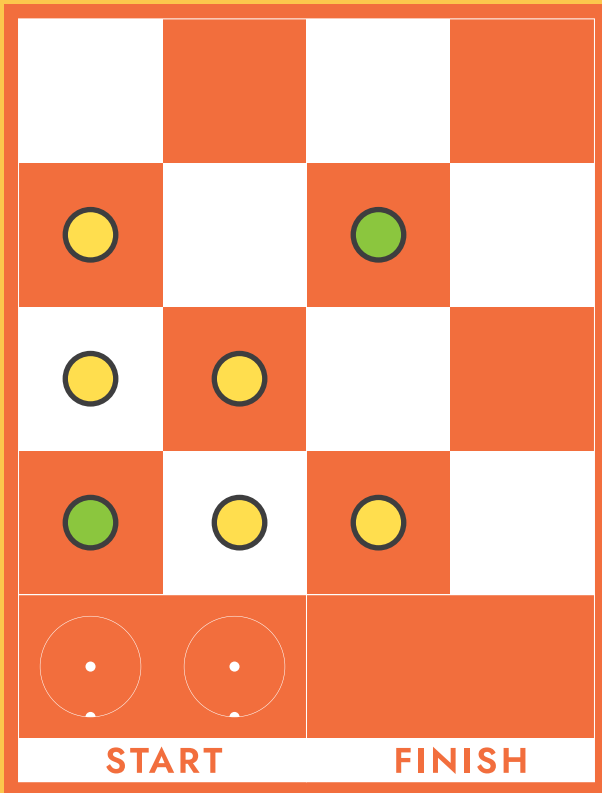




Challenge 3

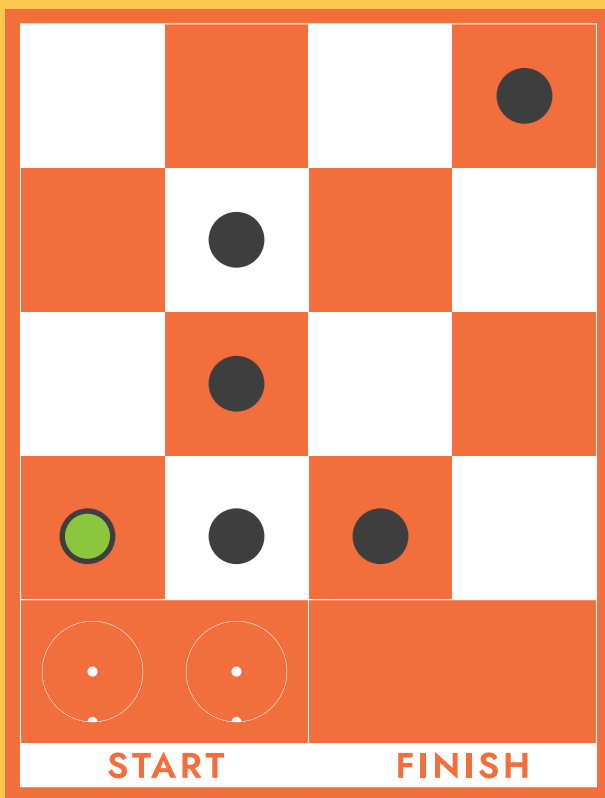


Challenge 4



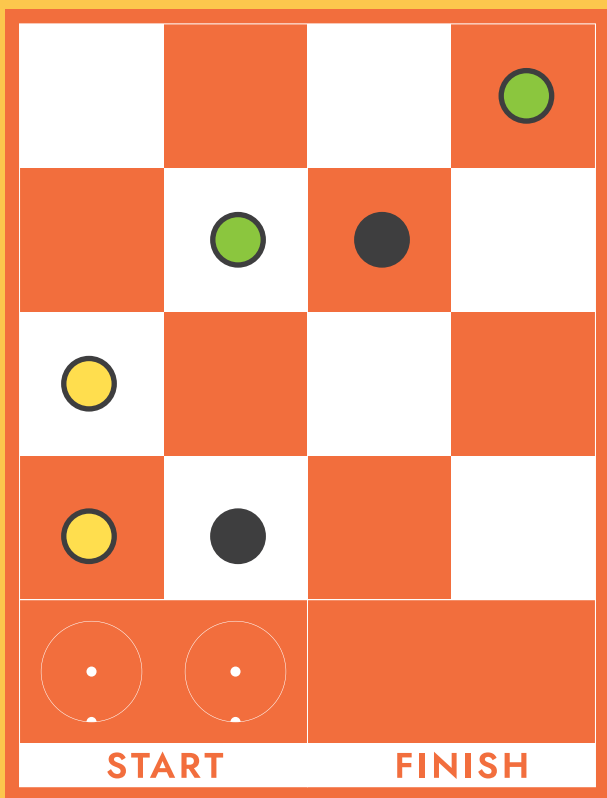


Challenge 5

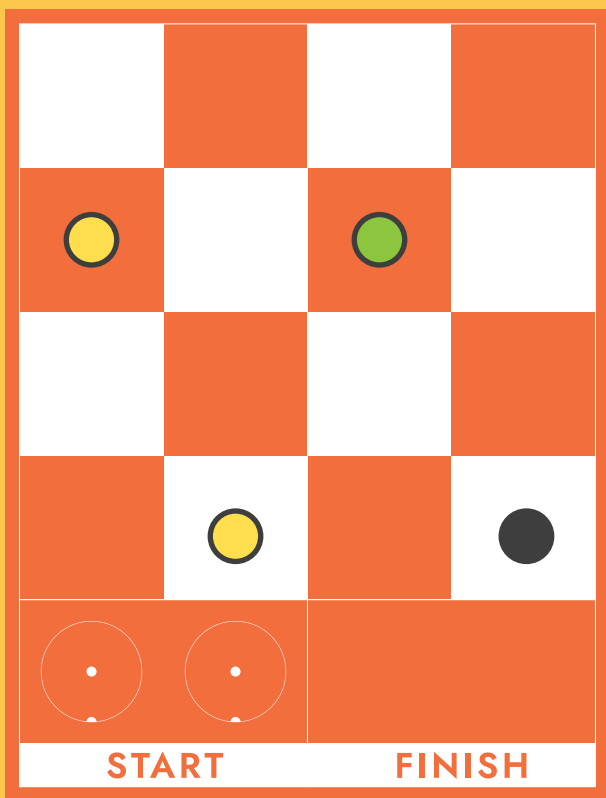




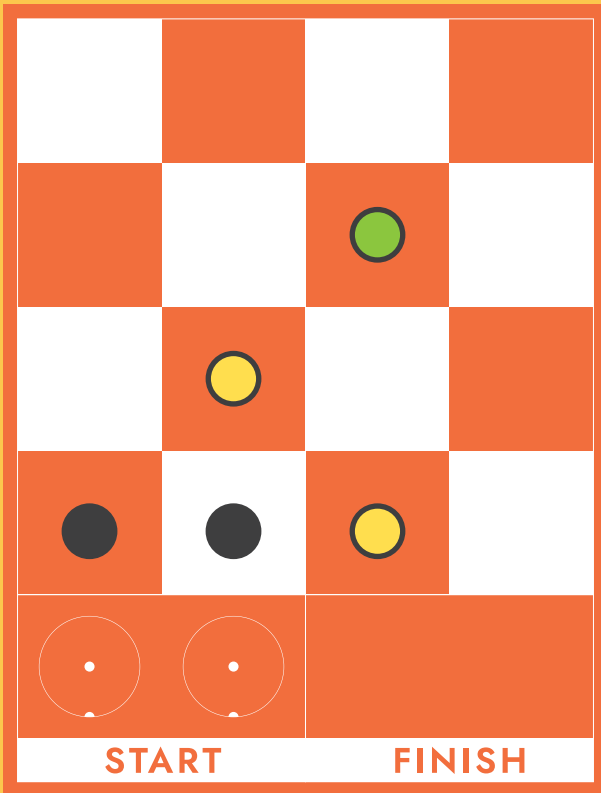
Challenge 6



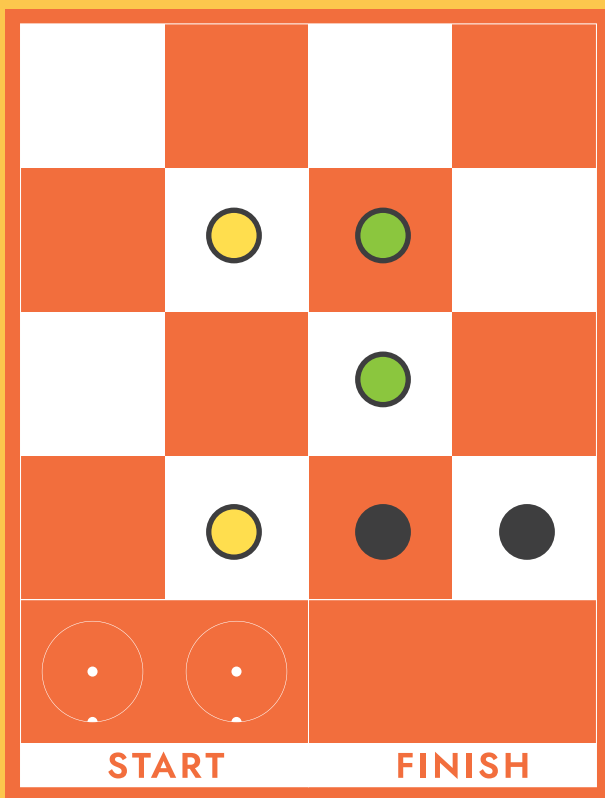
Challenge 7



Challenge 8

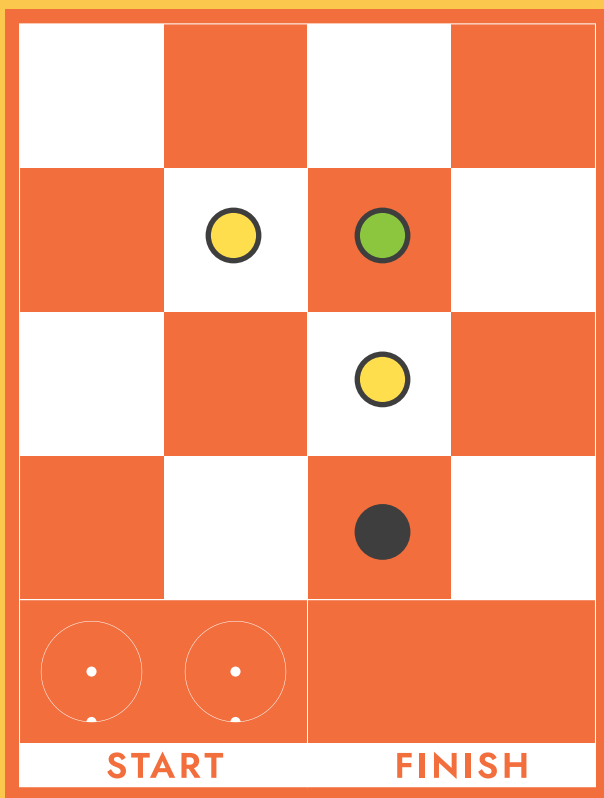


Challenge 9

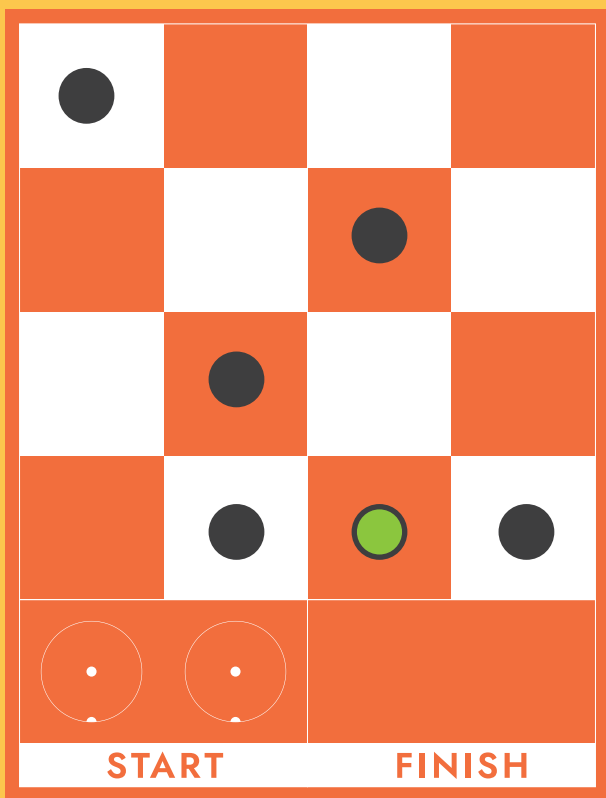




Challenge 10



Challenge 11





Challenge 12

